

Enliven services for older New Zealanders and Whaikaha – people with disabilities

Caring, enabling, supporting.

At Enliven we grow increasingly concerned about the shortage of qualified Aged Residential Care (ARC) nurses in Aotearoa. Charitable not-for-profit providers like us can't compete with the higher wages that our competitors offer, and so we lose good staff and find it increasingly hard to recruit them.

The Retirement Commission released data late 2022 suggesting that a third of the population retiring today have no equity, and this population will swell to two thirds in coming years. They need capable not-for-profit providers in the community like Enliven, because they can't afford to pay the premium price for private (for-profit) facilities. If their health fails, it's New Zealand's public health system that suffers, if providers like us can't staff our services adequately. This is why we held a political forum early this year, to raise the issue of affordable aged care with our Party leaders (see more about the forum on p8).

We were delighted when government announced more funding for initiatives serving the Dementia Mate Wareware Action Plan. PS Upper South Island secured a contract with Te Whatu Ora to pilot a project providing innovative dementia care across Te Waipounamu for people with Mate Wareware. PSUSI's role is to project-manage this collaborative contract, working closely with Alzheimers NZ, PS Otago, PS South Canterbury, and Access Community Health Otago, to deliver 17 whare tautoko/homeshare programmes.

Ngā Hau e Wha marae have agreed to provide a whare tautoko to host Māori whānau who have Mate Wareware. This will be the first dedicated whare tautoko for Māori whānau in the greater Ōtautahi area. This has come about because of PSUSI's relationship with Tuahiwi and Nga Hau e Wha who support each other on many levels throughout their rohe.

Enliven is usually known for its Aged Care services but we also provide Enliven Disability services too. At PS East Coast for example, Enliven provides residential services for disabled people under 65 with a high level of complex support needs. There is currently one 22-bed service (Rowan) and two smaller houses (Middle Road). Our team works alongside the 'flatters', supporting them to reach their potential in completing the necessary tasks of life. Flatters are assisted to do as much for themselves as possible. PS Northern also provided Disability homecare services to 3108 people through individualised funding. PS Central served 219 disabled people with both residential care, respite, day programmes and mobility assessments. Across the South Island our regions served 290 more disabled people with domestic assistance, residential care, Club Enliven day programmes, SupportLink companions and Total Mobility services.

4275
in-home support clients and **1771**
respite care clients

"They care for me and show I am not alone. They have changed my life for the better."

– Enliven Intensive Home Support, Hastings / Napier, Hawke's Bay.

2264
day programme attendees

1786
carebeds in **29** Aged Residential Care homes

18
retirement villages with **397** independent/supported living apartments

"The Tōtara club is my tie to humanity"

– Enliven Tōtara Club, Christchurch (Day Programme for Older people/Kaumātua)



Family Works New Zealand Takihua takimano – Making a difference together

The Family Works vision is for Aotearoa to be the best place in the world to raise children. We want all tamariki and rangatahi to flourish so we work to support them and their whānau, and to champion their cause in our community.

Our work with clients is vital in reducing child protection referrals to Oranga Tamariki, also family violence referrals, re-offending rates and thereby we contribute to safer communities. Our work also helps lower unemployment and youth benefit rates and reduce hospital admissions.

In every region throughout the year, our Family Works Managers reported seeing higher stress and anxiety in more clients, related to the higher costs of living, especially food insecurity in the home. Some feared that rising anxiety and depression were impacting rates of family and sexual violence, as well the rates of trauma among children living in unstable housing or witnessing family breakdown. Across all regions Managers reported heavier casenotes for each client, detailing this greater complexity of need inside homes.

We fear that rising financial pressures over a prolonged period means more children are being left in situations of neglect, while parents work longer hours to pay the bills. In Southland for example, staff noted how higher truancy and gaming were outcomes of this neglect, affecting education outcomes among their clients and risking late diagnosis of mental illness or learning difficulties.

While more of our services are likely to be disrupted regionally during and after a climate event or other kinds of disaster, Family Works mitigates catastrophe for children and families every day, throughout the year. We struggle to understand why funding for Family Start and Social Workers in Schools was cut by Oranga Tamariki during this period, when such services are needed more than ever to identify and mitigate risks for tamariki inside troubled homes.

2519
financial capability clients

3689
family/sexual violence prevention clients

10,296
children, young people and adults provided social work, counselling or other mental health support

9609
food parcels plus **2717** fresh produce packs distributed to hungry New Zealanders

"Before I felt sad, angry, scared, lonely. Now I am happy, pleased and safe."

– Child from the Social Workers in Schools programme, Porirua.

"Your willingness to continue working with me, not just finishing after a few sessions, your ability to see me, hear me and work with me, actually help me and not just tick the boxes. You saw me as a person and made sure you stayed with me to get results I needed."

– Casework client, FW Tairāwhiti.

991
Family Dispute Resolution clients

Presbyterian Support New Zealand is proud to be a Tindall Foundation Local Donation Manager. We encourage applications from our regional organisations and also our Church partners, who wish to undertake local projects for tamariki and whānau in their communities. It is a privilege to read the reports of these initiatives at the end of the year and learn of the difference these funds have made. Here are just some examples in every region.



Presbyterian Support



In rural Waitara, Taranaki, **Knox Presbyterian Church** received support to coordinate the **children's programmes and family support services** in that region. In Wellington, Island Bay Presbyterian Church's **Tēpu Mō Tātau programme** provided mentoring and leadership skills to the young people residing in the high-density social housing complexes of Berhampore. Presbyterian Support Central was given support to **"Focus on Marton"** with a **safety programme** for adults and a Family Works social worker based in the area.

Presbyterian Support Northern's Lifeline **recruited and trained 23 new volunteers** to meet the increased demand for counselling in 2021. PSN's **Communities Feeding Communities** Project created a sensory nature play area with allotment gardens at its Mt Roskill site.

PSN's Shine family violence service is Auckland-based although Shine's team offers family violence training nationally (and online).



PS Northern manages the national Lifeline service.



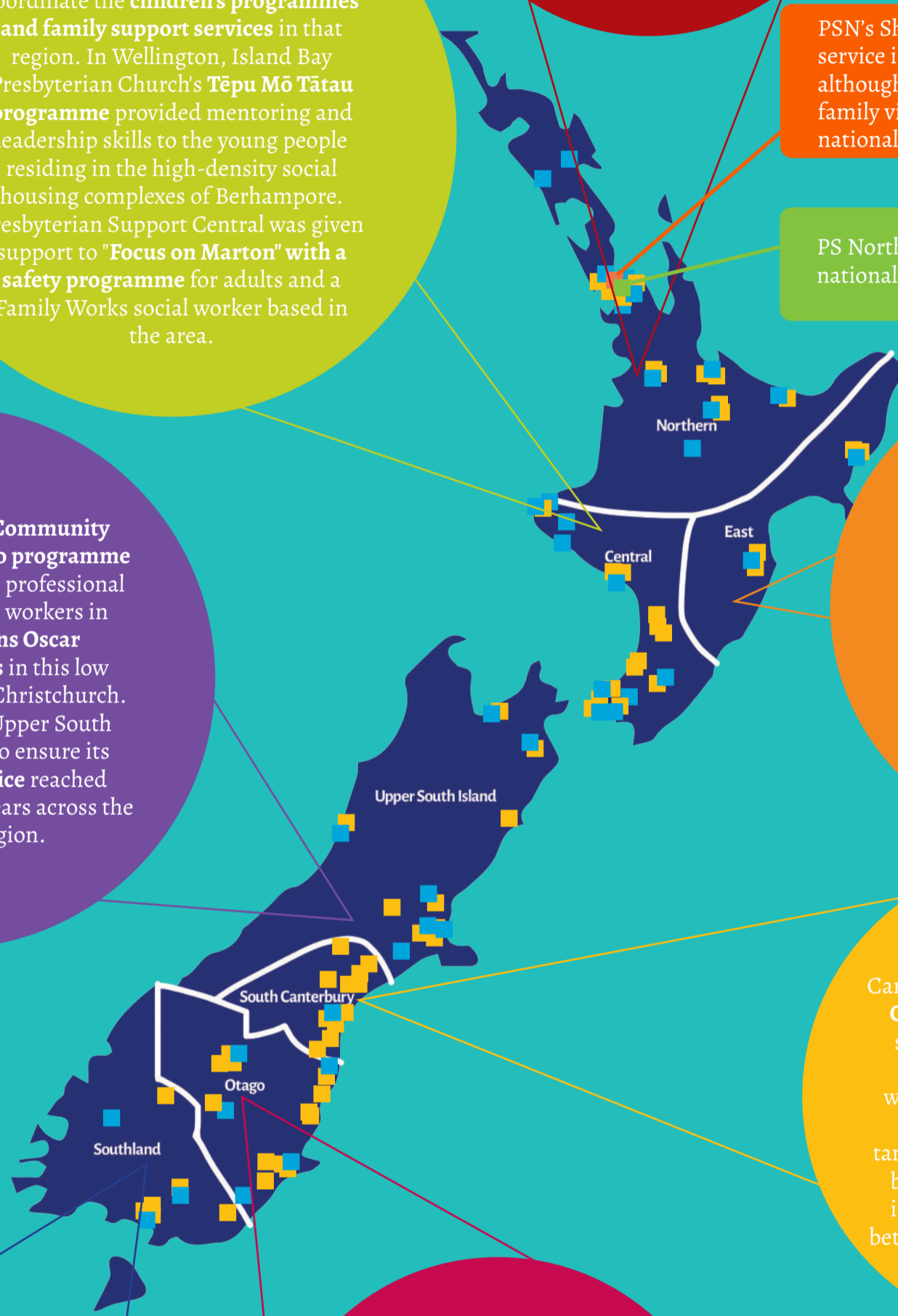
Hornby Presbyterian Community Trust's Te Whare Awhero programme was supported to ensure professional counselling, **Mana Ake** workers in schools and **Horizons Oscar childcare programmes** in this low socio-economic area of Christchurch. Presbyterian Support Upper South Island was supported to ensure its **Youth Mentoring service** reached at-risk youth aged 6-14 years across the Marlborough region.

Presbyterian Support East Coast's **Poi Poi Mokopuna programme** is in its second year, for children with attachment and trauma related behaviours and their parents. PSEC's **Awhi Mai Awhi Atu programme** is a support group for nannies and koro raising their mokopuna, facilitated in both Gisborne and Tokomaru Bay.

Presbyterian Support South Canterbury's **Grandparents Raising Grandchildren programme** got support to provide a dedicated community whānau support worker. PSSC's **Whānau Ngāhau** is a Theraplay approach to tamariki/family therapy, to redress behavioural and developmental issues and enhance attachment between parents and their children.

Presbyterian Support Southland received support to run **He Kete Matauranga Kaupapa Māori training** to all their Family Works Staff, increase confidence engaging with whānau Māori in Murihiku. **Upper Clutha Presbyterian Church's Precious Beginnings Programme** is a parenting programme supporting new parents with babies in their first 1000 days.

In the rurally isolated Waitaki district Presbyterian Support Otago were supported to hold **clinics** as well as visit individual clients on an appointment basis. In Dunedin, PSO's **Buddy Programme** was supported to ensure children 4-12 yrs old are matched well with carefully selected and trained adult volunteer Mentors.



Together the seven Presbyterian Support regional organisations provide these services nationwide:

